

Reuse, Remodel, Renovate

Strategic Planning Process to Focus on Supporting the Needs of Students and Adults in the School's Second Century

Royer-Greaves School for Blind Executive Director Vicky Mayer is pleased to announce that the Paoli school has begun work on a new strategic plan.

Founded in 1921, Royer-Greaves serves students and adults who are blind or visually impaired and have cognitive, physical, or other disabilities. The approach of Royer-Greaves' 100-year-anniversary seemed an especially appropriate time to evaluate changes that will position the school to further its mission in its second century, Mayer said.

"Our student and adult populations continue to change.

Our understanding of the support that they need to live as independently as possible continues to grow. Assistive technologies get better and better. It only makes sense that our campus cannot stay the same," Mayer said.

Through strategic planning, Royer-Greaves leaders and other experts will evaluate the school's educational, therapeutic, and training programs, compare them to current and future needs of the students and adults the school serves, and determine what programmatic changes should be made to support

those needs. Royer-Greaves remains committed to strengthening and expanding its community-based program model.

When finished, the Royer-Greaves strategic plan will also map out the physical changes to buildings, technology, and other infrastructure that would create an environment fully supportive of the changes in educational

and other program offerings. The strategic plan will prioritize projects and determine how best to raise the funds necessary to implement them.

Some needs are already fairly apparent. For example, some school and Adult Training Facility pro-

grams need more space, either for additional enrollment or because classrooms and hallways need to be redesigned to accommodate modern wheelchairs and other equipment. Other programming needs and the best ways to meet them are being studied, but adaptive reuse of current buildings and preservation of the school's history are among the key goals, Mayer said.

For more information about the current state of the school's facilities, please see "A Royer-Greaves Buildings Snapshot," below.



Royer-Greaves School Invites the Community to Stay Informed and Get Involved

Royer-Greaves School for Blind has enjoyed the support of local residents, businesses, and elected officials for nearly 100 years. All have had a big and positive role in our ability to provide quality training and education for students and adults who are blind or visually impaired and have other disabilities. We want to keep all corners of our community informed and involved as we move forward toward a strategic plan to guide us into our next 100 years. You are our partners in this journey!

- Executive Director Vicky Mayer is assembling a team of local neighbors, business people, and others to advise Royer-Greaves as we develop our strategic plan.
- She will be seeking other participants to provide feedback as our work progresses.
- Informational meetings will be held periodically for all who are interested.
- Strategic plan news and meeting schedules will be shared in future newsletters, on Facebook, and via our website, www.Royer-Greaves.org.

We appreciate your support, and look forward to working together!

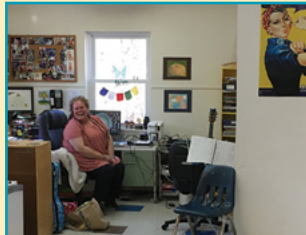
A Royer-Greaves Buildings Snapshot

• **PEYTON HALL:** Built in 1960 with dining hall/kitchen area renovations in 1985. The upper level is 7,654-square-feet and lower level 3,726-square-feet.

Current Primary Uses:

School classrooms, nurse's office, administrator's office, therapy areas, music room, kitchen, and dining hall.

Functional Issues: Classrooms and resources need to be renovated in support of an innovative educational environment



and to meet current and projected space, layout and design standards

• **MANOR HOUSE:** Built in 1904, this classic Chester County stone mansion is the most historic and iconic on campus. The three upper floors contain 12,615-square feet and the basement an additional 4,349-square-feet.

Current Primary Uses: Administrative, support and community meeting space

Functional Issues: Major support systems (e.g. electrical, plumbing, multi-floor accessibility) need to be replaced/

continued on p.2

A Royer-Greaves Buildings Snapshot *continued from p. 1*

improved. Repurposing opportunity for community and advocacy meeting space, staff education and training center and assistive technology services.

● **PERRY HALL:** Originally a barn and then a carriage house, this two-story stone building with basement was built in 1904. The 3,427-square foot first floor was renovated in 1955. The second floor is 1,122-square feet, and the basement 862-square-feet.

Current Primary Uses: Adult Training Facility (ATF) classrooms, music therapy program, administrative offices and a small kitchen area

Functional Issues: Room configurations (size and adjacencies) limits flow and resource efficiencies for present and projected program needs (current waiting list for services)

● **FLORIG HALL:** Commonly referred to as the campus gym and auditorium, this two-level brick-faced building was built in 1963. It has a vaulted ceiling and an elevated stage. The upper level is 9,479-square-feet, the lower level 973-square-feet.

Current Primary Uses: Multipurpose center for adaptive physical education; recreational activities; special events; arts/performance events; indoor swimming pool.



Functional Issues:

Well-used flexible space that may require limited upgrades.

● **LION HALL:** Built in 1971, this two-story brick-faced building was previously a dormitory and has residential rooms and common areas. Renovations were made to the 3,867-square-foot lower level in 1987. The upper level has 4,440-square-feet.

Current Primary Uses: Unoccupied

Functional Issues: Previously an adult residential program, current planning work includes the feasibility of a children's behavioral program and/or adult day services.

● **BOY SCOUT COTTAGE:** This single story, 180-square-foot structure was built in 1904 and used as a children's playhouse; renovated as an Eagle's Boy Scout project in the 1940s.

Present Use: Unoccupied.

Functional Issues: Current use limited due to size and age issues; may have potential as a vocational or recreational/social space resource

● **GARAGE:** A 420-square-foot building with 60-square-foot bump-out.

Current Primary Uses: Maintenance/grounds storage

Functional Issues: Needs to be removed based on age, condition and placement issues (located within an Employee Parking Area)



R O Y E R - G R E A V E S S T R A T

Royer-Greaves School for Blind is developing a new strategic plan. This plan will guide our future growth, ensuring that buildings and other infrastructure support the educational, therapeutic, and other needs of Royer-Greaves students and adults well into the future. Here are some key steps.

Fall 2017

- School leaders initiate a strategic planning process and begin to assess the future needs of Royer-Greaves students and adults in the school and training programs.

December 2017

- School leaders interview school personnel to help determine projected enrollment and programmatic needs and gauge how well existing facilities can meet those needs.
- Development Consultant William D. Pugh & Associates and fundraising firm Sylvia & Carter & Associates begin a study of Royer-Greaves that will culminate in recommendations for fundraising to support the strategic plan.

January 2018

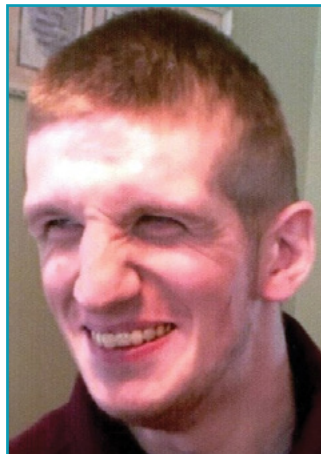
- Royer-Greaves issues a Request for Proposal (RFP) seeking an architecture firm to conduct a Facilities Master Plan focusing on Royer-Greaves' five major buildings: Peyton Hall, Perry Hall, Lions Hall, Florig Hall, and the Manor House.

Royer-Greaves Celebrates the Life of Graduate Dylan G. Henderson by Establishing Memorial Music Fund

Dylan G. Henderson loved music, and through music, his school will remember him. Royer-Greaves School for Blind is proud to announce the creation of the Dylan G. Henderson Memorial Music Fund. Donations made in honor of Dylan, who died on April 3 at the age of 24, will support Royer-Greaves' music program.

"Donations made in Dylan's memory will enable us to provide our students and adults with more of the music-related experiences he loved," said Royer-Greaves Executive Director Vicky Mayer. This could include field trips, purchases such as musical instruments or recorded songs, or improvements to the music room, she said.

Dylan lived in Manahawkin, N.J. He bravely fought against the disease he was born with until his body got tired. He died surrounded by family.



Before graduating from Royer-Greaves in 2015, he learned and lived on campus. Dylan used few words, but had no

problem expressing himself, said Mayer, who was then residential director. Like many other students and adults here, music was one of his favorite ways to do so. He especially loved rap music, and the song "Happy Birthday to You," no matter whose birthday it was.

He expressed kindness and caring, happily passing out high-fives or sitting next to a friend

on the couch, especially if that friend had a story to read. Dylan also had an exquisite sense of humor and was an eager listener to both jokes and silly poems.

His constant smile and contagious laughter gave him a very big presence on the Paoli campus. He was, as he was fond of telling anyone who asked, "The Man."

How to Contribute to the Dylan G. Henderson Memorial Music Fund

Donations to the Dylan G. Henderson Memorial Music

Fund can be made via PayPal on the

Royer-Greaves website, www.Royer-Greaves.org.

Please write "Dylan G. Henderson" in the "add special instructions" section.

Checks can be mailed to Royer-Greaves School for Blind,

118 South Valley Road, Paoli, PA 19301.

Please write "Dylan G. Henderson" on the memo line.



E G I C P L A N T I M E L I N E

February

- Royer-Greaves begins mini-plans for each of its programs, detailing the projected enrollment, program offerings, and other needs of each.
- The development and fundraising consultants conduct a multi-week review of Royer-Greaves' current fundraising efforts and potential fundraising capabilities.

April

- A facilities study is launched.
- An architecture firm is selected.

Spring/Summer 2018

- The facilities study will result in a baseline report on the usable space contained in existing buildings and recommendations on updating that space and potentially add new space to meet future needs. The study will also suggest project priorities and phasing and estimate costs.
- Using the facilities report and Royer-Greaves' programming needs and priorities, a fundraising goal will be set and a capital campaign launched.

By 2020

- The work to amend Royer-Greaves' buildings and grounds to align them with the needs of our students and adults begins.

New Sherwin-Williams Paint Store Managers Color Royer-Greaves' World

Several Royer-Greaves School for Blind adult classrooms are sporting vibrant new colors, thanks to the efforts of more than two dozen new Sherwin-Williams store managers.

The managers came from all over the east coast – Virginia to Maine – for a week of training, said Sherwin-Williams Archi-



tectural Product Manager Brendan Patti. The company donated 44 gallons of paint in shades of blue selected by Royer-Greaves with an eye toward contrast, which helps those with visual impairment see better. The managers, plus Patti and two other West Chester training center staffers, donated their time and effort.

Why launch store manager training with a community painting project? Not every manager comes from a painting background, and the experience helps them better understand what a large painting project takes, so they can help their customers prepare, Patti said. The managers also applied a new, stain-blocking paint line – Extreme Cover – before it arrives in their stores. “But the biggest thing, the most important thing, is helping the community,” Brendan said.

“Seeing the reaction of everyone at Royer-Greaves to the fresh paint was a fantastic feeling,” he said. “It feels good to give back, and it

feels good to work for a company that does so.”

Everyone at Royer-Greaves is loving the results. “It is such an amazing transformation,” said Executive Director Vicky Mayer. “Our classrooms are clean, bright and so inviting. The colors are soothing and calming. We cannot thank Sherwin-Williams enough.”

More good news from Patti: Future management trainees will be painting Royer-Greaves' offices!

